

The Capgemini 5G Box

A Portable Private 5G and Edge Computing Platform for Mission-Critical Communications and IoT-Enabled Field Operations



Secure connectivity and communications in the field

The Capgemini 5G Box is a portable, autonomous private 5G SA solution that deploys a secure tactical bubble instantly, giving field operators full connectivity and encrypted communications.

It combines 5G radio, a 5G Standalone core and a GPU-enabled edge computing platform to create an all-in-one private 5G network, in one compact box.

Designed for mission-critical environments, the 5G Box supports MCX and Unified Communications as

well as edge use cases like real-time AI video analytics, video streaming and IoT data processing. It can support thousands of connected users and devices, maintaining operational continuity and faster decision-making even in remote or degraded environments.

Built on Capgemini's deep expertise in critical communications and broadband transformation programmes, the 5G Box not only provides full connectivity but also accelerates innovation, experimentation and deployment – from proof of concept to real-world field use.

The main features of the Capgemini 5G Box

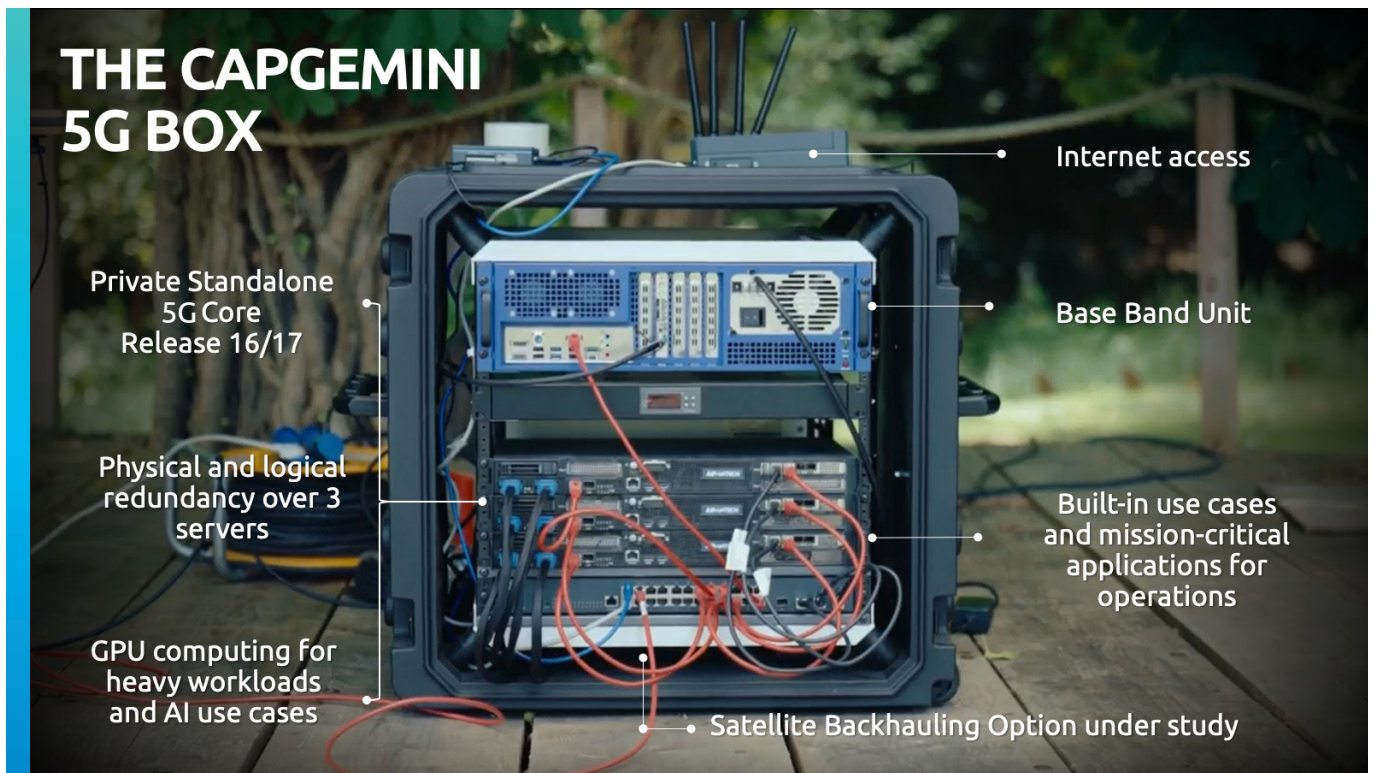


The technology powering this all-in-one solution

The Capgemini 5G Box embeds a private 5G Standalone network (3GPP Release 16/17) designed for mission-critical operations. It delivers high-performance,

low-latency and secure connectivity, with built-in redundancy and advanced network management capabilities to support multiple concurrent use cases.

A closer look at what's inside



3 big benefits of the Capgemini 5G Box



Rapid deployment and operational readiness

Off-the-shelf private 5G network, pre-assembled and pre-tested, ready to support field tests and live operations.



High-performance connectivity for critical operations

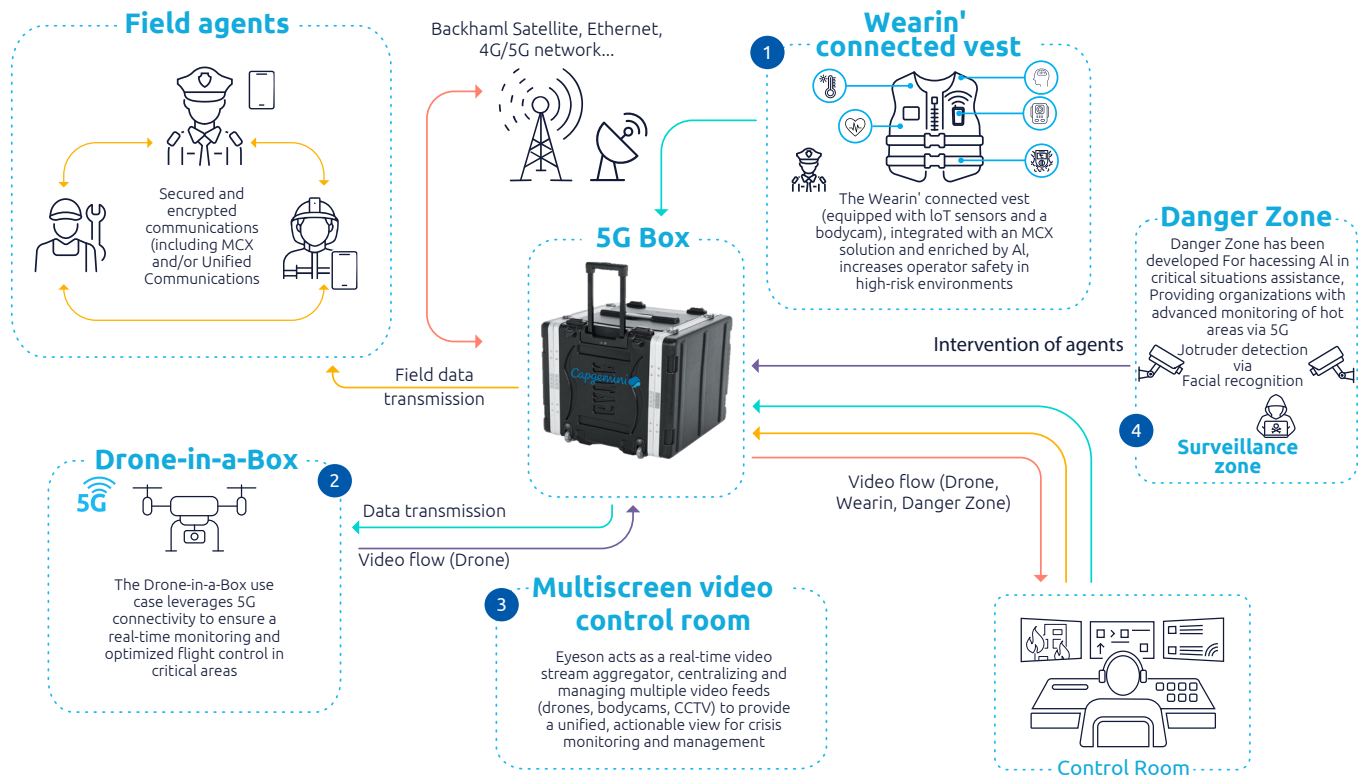
Optimized throughput, low latency and high-quality service, with built-in network orchestration and slicing to prioritize critical traffic.



Edge intelligence where connectivity is limited

GPU-powered edge computing enabling local AI analytics, reduced cloud dependency, and improved responsiveness, resilience and data privacy.

Sample use cases in the field



From demonstration to real-world deployment

The [Capgemini 5G Box](#) can be used at every step of the journey – from demos and pilots to live mission field operations. In doing so, it can validate and speed up a wide range of mission-critical use cases.

To find out more, get in touch



Pierre Fortier
Vice President, Capgemini Invent
5G Global Lead
pierre.fortier@capgemini.com



Cédric Bourrely
Director | Capgemini Invent
5G Labs Program Lead / Paris Lab Director
cedric.bourrely@capgemini.com



Patrice Crutel
Senior Director | Capgemini Invent
5G & Mission Critical Services Strategy
patrice.crutel@capgemini.com

About Capgemini

Capgemini is an AI-powered global business and technology transformation partner, delivering tangible business value. We imagine the future of organizations and make it real with AI, technology and people. With our strong heritage of nearly 60 years, we are a responsible and diverse group of over 420,000 team members in more than 50 countries. We deliver end-to-end services and solutions with our deep industry expertise and strong partner ecosystem, leveraging our capabilities across strategy, technology, design, engineering and business operations. The Group reported 2025 global revenues of €22.5 billion.

Make it real | www.capgemini.com

