

Take insights to the next level


Upgrade to Oracle Business Intelligence 12c



INSIGHTS & DATA

OBI 12c is now available and with it comes an array of new features that make upgrading from previous releases very compelling.

Introduction



Oracle's analytics technology is easier and cheaper to develop, deploy, and run than it was previously.

Maximize your on-premise investment in Oracle analytics with a rapid and effective upgrade solution in collaboration with Capgemini and increase the value you can derive from your business data. With a richer user experience and true self-service agile analytics, OBI 12c can help you attain increased user adoption across your organization, enabling you to analyze your data quicker, and be able to make business critical decisions faster.

Business users can mash-up data from multiple sources in their analyses, leverage advanced analytics features, including functions in R – with a similarly great user experience across desktop and mobile devices and with improved performance compared with previous releases, thanks to in-memory performance optimization enhancements in OBI 12c.

OBI 12c provides a world class leading BI platform which comes with an array of tools to create interactive visualizations and rapidly get insights from your business data. OBI 12c capability can be used to produce intuitive visual analysis and powerful dashboards with advanced calculations and provides a number of delivery methods to distribute the computed data. Analyses can be done on data integrated from multiple sources and source types which can include both cloud and non-cloud systems, and incorporate different types of data.

The comprehensive feature set of OBI 12c - spanning enterprise dashboards, self-service visual analytics and mobile - means that customers can rationalize their IT footprint on to a single comprehensive platform for analytics, which simplifies ease of use.

From an IT perspective, OBI 12c also makes perfect business sense – the new simplified architecture means that less administration effort is required to implement and maintain, including cloning and backups. Overall this means reduced IT costs and improved ROI. For example, the software installation process is 25% faster than in previous releases and complex clustered deployments require 30% fewer steps.

Upgrading has never been easier with features such as BI Application Archive files and the Oracle BI Baseline Validation Tool. These tools simplify the packaging up of your existing 11g dashboards and metadata and provide the means to automate regression testing to prove the upgrade process was successful.

Put simply, Oracle's analytics technology is easier and cheaper to develop, deploy, and run than it was previously.

Additionally, some of the new architecture features are laying the foundation for future private and public cloud integration, providing you with architectural choice in the future should you wish to move to the cloud.

Whether you are using the Oracle analytics software standalone or as part of a packaged Oracle BI Applications deployment, Capgemini can work with you to ensure you can take advantage of the new technology – with basic upgrade projects completing from as little as six weeks.

Key Benefits:

Significantly Enhanced User Interface

OBI 12c offers exciting new enhancements to Graphs, View, Analyses, Scorecards and Dashboards over previous versions.

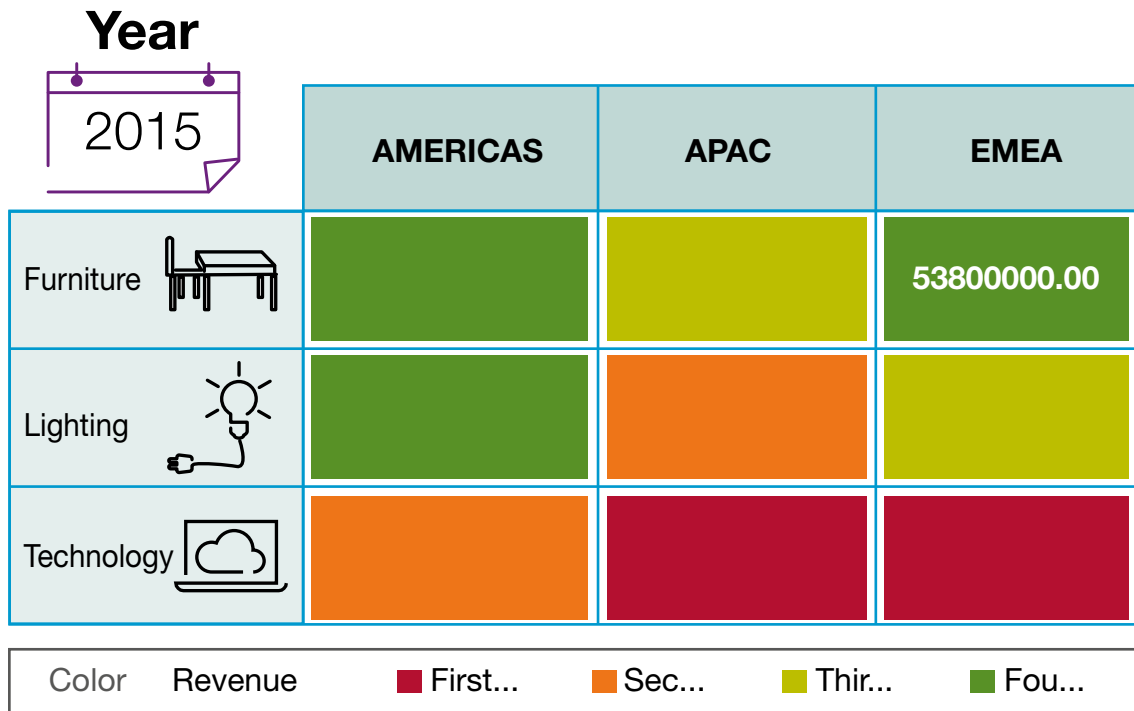
The screen layout is designed to be more aesthetically pleasing to the eye, with a rich, modern interface that utilises the Oracle Alta user interface that enables the reports to be more multimedia friendly across multiple devices.

Figure 1. Visually enhanced dashboards



For example, OBI 12c introduces the Heat Matrix graph to represent the two-dimensional data in a gradient of colours based upon the values inside the cells, allowing outliers to be identified immediately due to the data being represented in a more visual format.

Figure 2. Heat Matrix helps identify outliers



Self Service

OBI 12c offers new self-service capabilities for loading and blending data, with no modelling required—making fast analysis available to anyone in your organization.

Combining data sets gives you the ability to enhance existing managed subject areas by extending dimensions and adding facts. Create mash-ups instantly to easily blend your 'golden' data (i.e., your well governed enterprise data in your OBI instance) with data held in spreadsheets and instantaneously be able to identify trends, thus reducing the overhead in having IT move the data into the database before being able to analyze the data.

Visual Analytics

Being 100% self-service, Visual Analyzer offers a rich, dynamic consumer style experience that enables you, without any data modelling, to drag and drop attributes onto the screen to quickly identify trends and gain deep insights from your business data.

Visual Analyzer intelligently determines the appropriate default visualization style based on the data content. It provides a myriad of options, with visualizations functioning as filters that work in combination with guided navigation and search, to guide you through your exploration and also enables you to share your insights as stories to colleagues. Visual Analyzer is licensed separately from OBI 12c.

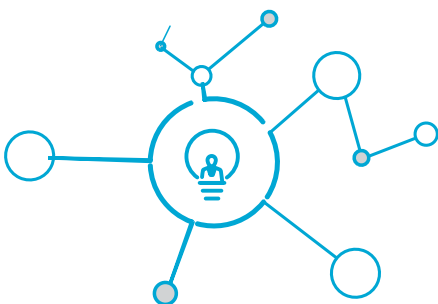
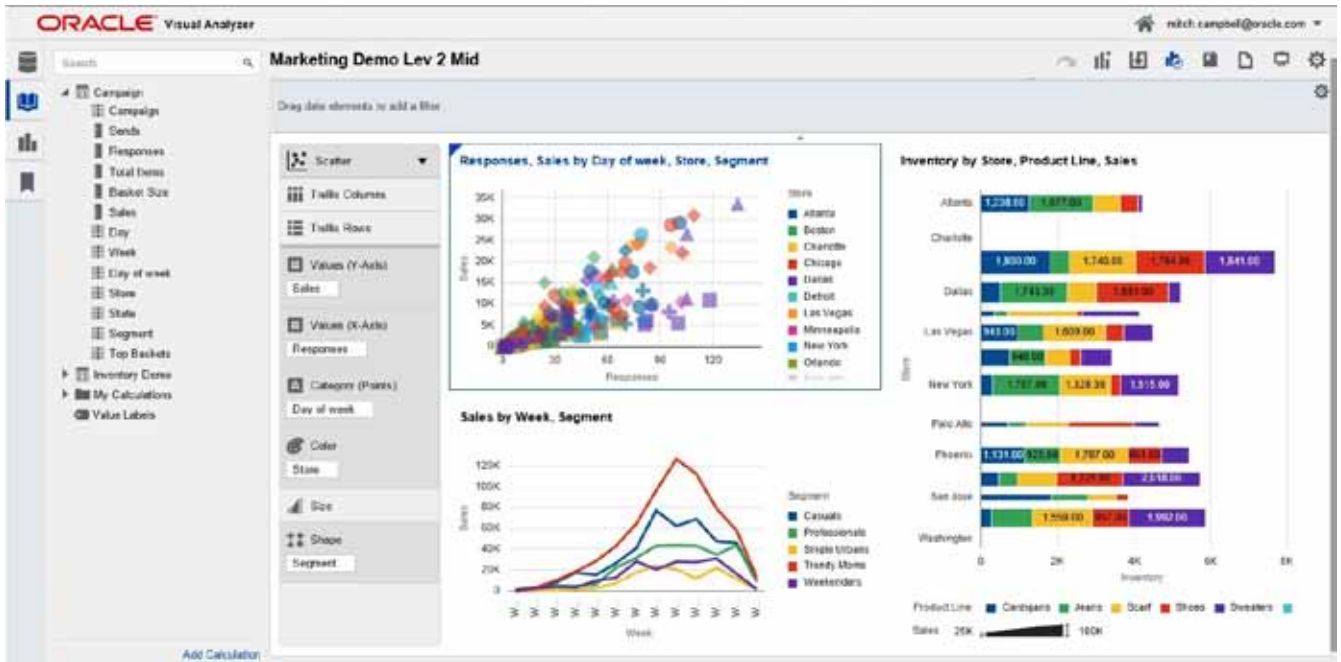


Figure 3. Visual Analyzer, allows users to quickly create mash-ups

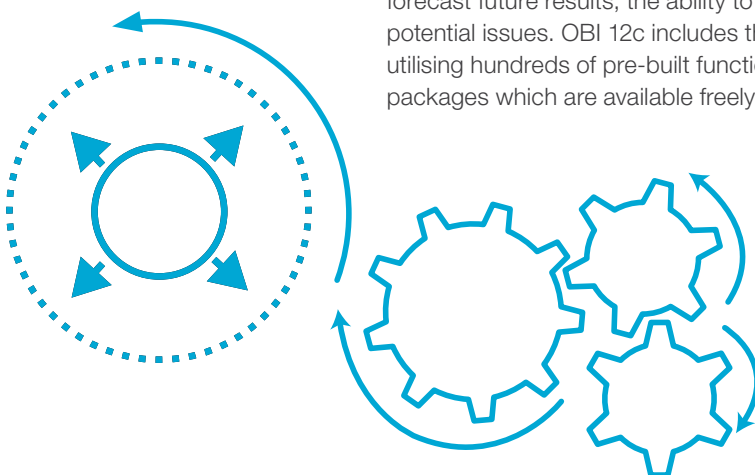


Enhanced Performance

OBI 12c accelerates in-memory processing, thus ensuring faster response times to analyses. The BI Server in-memory optimizations deliver faster rollups, data sorting, enhanced compression and complex memory usage for variable-length data which provides significant performance throughout the platform. The Oracle TimesTen In-Memory Database and Oracle Database 12c In-Memory options are also supported.

Advanced Analytics for Everyone

OBI 12c provides predictive analysis capabilities and enables users to more easily forecast future results, the ability to assemble items that are similar, and help identify potential issues. OBI 12c includes the ability to extend the analytics capability by utilising hundreds of pre-built functions or extend easily with the numerous R function packages which are available freely in the public domain.



Enhanced Mobile

OBI 12c now has an enhanced ability to interact with mobile communication devices, including wearables. The content pushed to these devices is able to reconfigure itself so that it is displayed in the most optimal setting for that device. You can utilize standard gesture functions in order to navigate the content pushed by OBI 12c, whilst with BI Ask you can talk to your data using a search-driven approach to analytics that is optimized for voice - you can literally ask questions and see visualizations displayed in response.

Figure 4. Improved mobile integration in OBI 12c



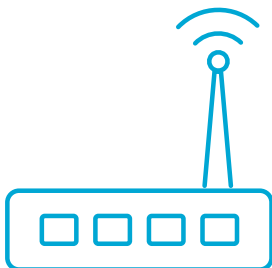
Better Connected

OBI 12c now gives you direct connectivity to Oracle Hyperion and Cloudera Impala, for broader, richer analysis.

Upgrading Made Easy

OBI 12c has made it a simple process to upgrade from 11g, which saves time and effort when moving between the two versions. Oracle provides standard tools and architectural improvements to facilitate the upgrade process from OBIEE 11g (versions 11.1.1.7 or later).

The introduction of BI Archive (BAR) files simplifies the migration of the actual dashboard and report content itself by reducing the number of steps required to physically move between environments. Now all the metadata required to deploy your custom content (such as the RPD and web catalog) is self contained in a single file.

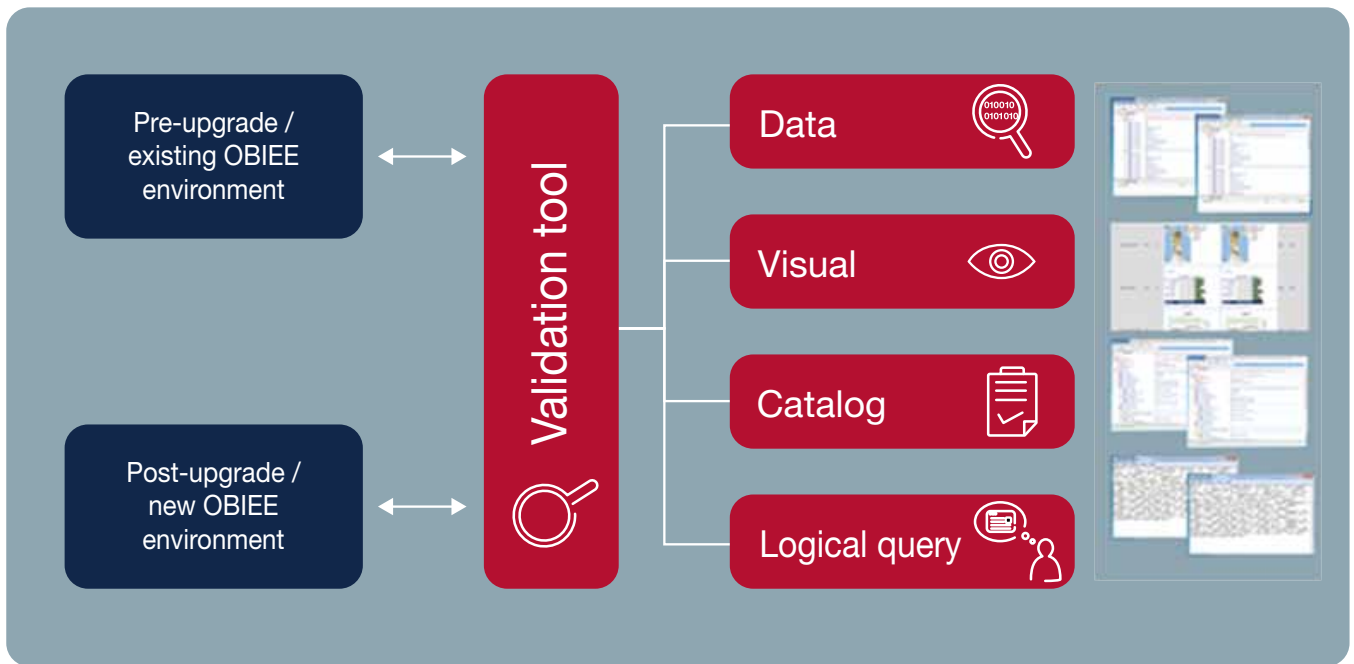


The BI Baseline Validation Tool automates the comparison of the upgraded objects from the OBIEE 11g environment to the OBI 12c environment. It provides:

- Data verification of report output
- Visual verification of report and dashboard layouts
- BI Catalog verification
- Logical query verification

Together, these features expedite the overall upgrade cycle, with significant time savings gained around the regression testing of upgraded content. This allows you to quickly build confidence that the upgrade was successful by providing verification that your reports and data behave similarly post upgrade.

Figure 5. Oracle BI Baseline Tool validation



Upgrading made easy with Capgemini

Completing in as little as **six weeks, Capgemini will ensure** that your **upgrade to OBI 12c will be a smooth, pain free experience.**

Capgemini brings deep experience and specialization in the Oracle and business analytics domains, spanning the breadth of Oracle's analytics solutions.

As an Oracle Diamond Partner Cloud Premier level, our consultants have many years worth of Oracle product implementation and upgrade experience. Upgrading to OBI 12c in collaboration with Capgemini will be a cost effective and pain free experience – enabling you to focus instead on gaining new business insights from your data.

Every customer is unique, and so the upgrade duration can vary based on factors such as your current software version and number of customizations.

Completing in as little as six weeks, Capgemini will ensure that your upgrade to OBI 12c will be a smooth, pain free experience.

On a high level, Capgemini would follow the below approach but would tailor the upgrade process based on your requirements:

- Conduct an OBI 12c demonstration to introduce the new features and help you understand the new concepts. Ideally, we will use a reduced sample of your organization's data to showcase the new features.
- Analyze and optimize the existing OBIEE system, thus preparing it for upgrade to OBI 12c.
- Review and understand what is to be migrated and how it is to be migrated, i.e., understanding the customizations that have been applied which are not automatically migrated using the Oracle migration utilities and determine the best approach for migration.
- Define a detailed test plan to validate the migration, to ensure existing functionalities are not impacted due to the new ones being introduced.
- Install and configure the new OBI 12c environment.
- Perform the upgrade to OBI 12c, including migrating the repository, catalog (reports and dashboards), users and security rules.
- Execute the test plan and validate the results to ensure all components have been migrated and work as expected.
- Apply visual customisations to dashboards and reports.
- Train the business users to work on the new features provided by OBI 12c.
- Deploy the new OBI 12c environment to the business and decommission the existing environments.

Your current version of OBIEE must be version (11.1.1.7) or later, in order to upgrade directly between OBIEE 11g and OBI 12c. However, if you are on an older version,



Capgemini will carry out a detailed review of your existing configuration and provide you with a tailor made plan to upgrade to OBI 12c.

Please note that there is no “in place” upgrade to OBI 12c from earlier releases - this means a fresh OBI 12c installation is required. However, the OBIEE 11g installation can continue to be used until the OBI 12c environment is rolled out to the end users.

If you are using Oracle Business Intelligence Applications (versions 7.9.6.4, 11.1.1.9.2 & 11.1.1.10.1), Capgemini can assist in helping you upgrade to OBI 12c, so you can leverage the great new features on offer.

Finally, if you wish to move to the cloud, OBI 12c provides the architectural framework to simplify the process to migrate to Oracle BI Cloud Services – which Capgemini also has the expertise to help you realize agile analytics in the cloud in under a month.

Trust Capgemini as your partner to take your insights to the next level with Oracle Business Intelligence 12c .





Contact Us:

Victor Jimenez

Oracle Global Alliance Lead for NA & APAC
victor.jimenez@capgemini.com

Jane Arnold-Hommet

Oracle Global Alliance Lead for EMEA
jane.arnold-hommet@capgemini.com

Capgemini Insights & Data

In a world of connected people and connected things, organizations need a better view of what's happening on the outside and a faster view of what's happening on the inside. Data must be the foundation of every decision, but more data simply creates more questions. With over 11,000 professionals across 40 countries, Capgemini's Insights & Data global practice can help you find the answers, by combining technology excellence, data science and business expertise. Together we leverage the new data landscape to create deep insights where it matters most - at the point of action.

To find out more visit us online at www.capgemini.com/insights-data and <https://www.linkedin.com/company/bi-big-data-&-analytics> or follow us on **Twitter @Capgemini**



About Capgemini

With more than 180,000 people in over 40 countries, Capgemini is one of the world's foremost providers of consulting, technology and outsourcing services. The Group reported 2015 global revenues of EUR 11.9 billion.

Together with its clients, Capgemini creates and delivers business, technology and digital solutions that fit their needs, enabling them to achieve innovation and competitiveness.

A deeply multicultural organization, Capgemini has developed its own way of working, the Collaborative Business Experience™, and draws on Rightshore®, its worldwide delivery model.

Learn more about us at

www.capgemini.com