

An end-to-end consult-to-operate reference data solution

IDMS (Integrated Data Management Services)

The challenge of managing reference data

In the face of declining margins and increased regulatory compliance, the banking and financial industry is being confronted with tough choices around an operating model that supports evolving business models, new products and fresh markets, while reducing long-term operating costs. Banks also face the challenge of increasing the quality of Financial Instrument Data (FID) on complex legacy infrastructure.

These challenges are accentuated by unrelenting regulatory pressure, and require new change management programs to comply with regulations such as Dodd-Frank, FATCA, and AML, and meet BCBS 239, Basel III and MiFID II requirements.

The downstream impact of bad data is significant with statistics indicating that up to 30% of financial trades fail due to FID issues, and over 50% of institutions reporting that they lack the agility to manage this type of data.

(Source: EDM Council).



Banks will operate in an increasingly unstable business and technology environment, and will need to transform this instability into new opportunities rather than passively react to it.

Gartner

Delivering the Digital Banking Experience Primer for 2017, Vittorio D'Orazio, Alistair Newton, January 3, 2017

IDMS is a powerful, end-to-end industry solution that delivers unrivalled business value to your financial institution, including:

- **Cost reduction** – up to 50% savings in the cost of your Reference Data Management.
- **Enhanced agility** – easier scalability through offshore resourcing and rapid speed of implementation and transition.
- **Increased accuracy** – almost 100% accurate and up-to-date reference data, leveraging automation to reduce manual processing.
- **Reduced risk** – reduced global risk exposure through the standardization of your data.

A powerful Reference Data Management platform

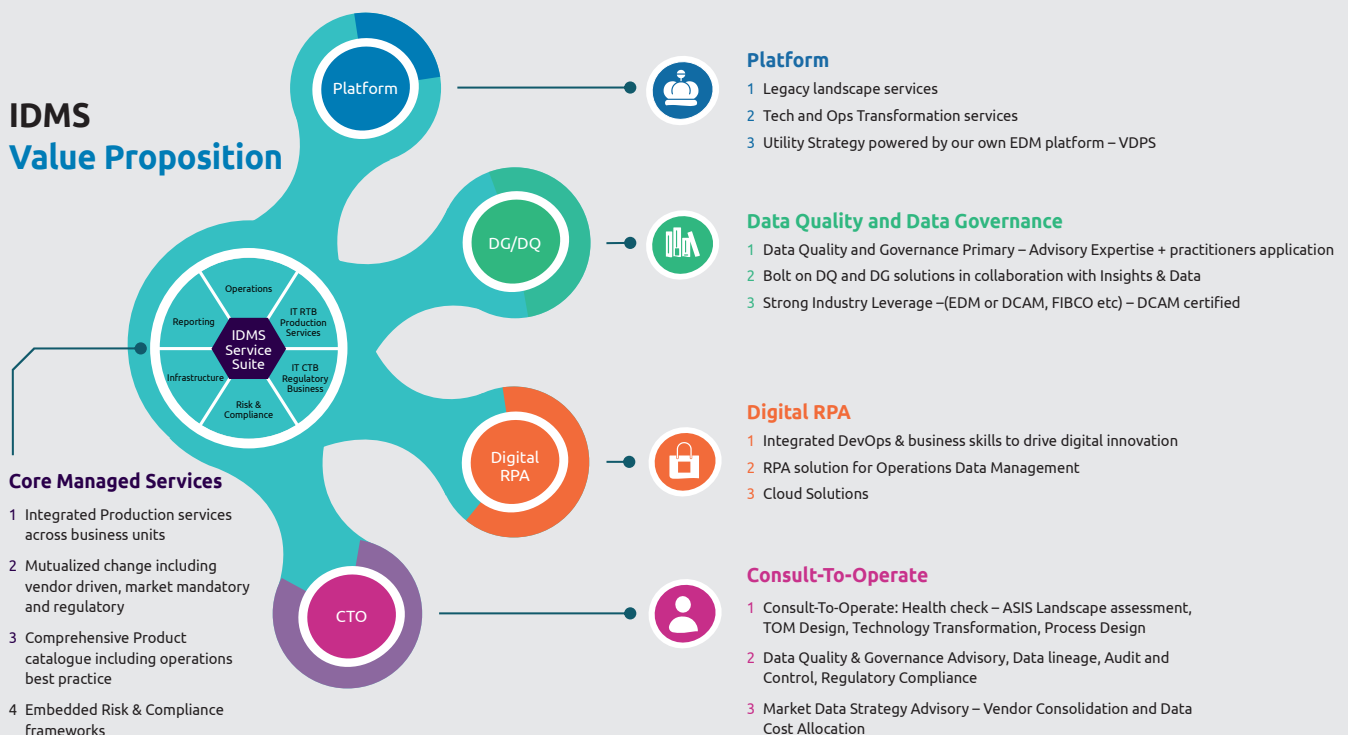
Your bank can derive immediate and tangible business benefits, including cost savings, improved accuracy and more agile reporting capabilities, through implementing our proven IDMS (Integrated Data Management Services) solution.

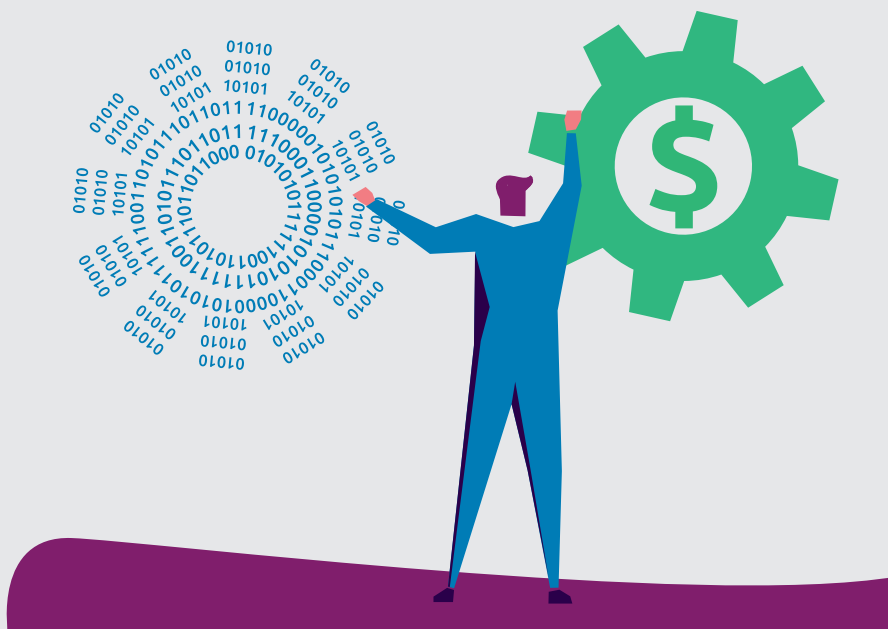
IDMS delivers an end-to-end platform-based managed service for sourcing, mastering and distributing your bank’s reference data across all asset classes and geographies, consolidating all of your disparate legacy systems, platforms and processes into a single Reference Data Management platform. As one of our specially configured Integrated Technology and Operations (ITOPS) platforms, IDMS supports your data management function by delivering new operating model requirements for your platforms and business process execution – enabling you to focus on your core business activities and revenue building services.

Combine your IT and operations into a single, unified solution

IDMS leverages our ITOPS model to optimize your business through a combination of process investment strategies, technology deployment, and industry-specific Business Process Outsourcing (BPO) and provisioning, leading to a more effective and efficient business. This includes a fully managed, end-to-end technology and operations service across your business units, which provides:

- A robust SLA/KPI framework including operations best practice.
- Integrated RTB (Run the Bank) and mutualized CTB (Change the Bank).
- Vendor management, risk and compliance.
- A comprehensive catalogue of technology and services that forms the service layer and core components.





IDMS manages and remediates your legacy data infrastructure with a committed cost saving offered on a flexible business model to meet your needs:

- A fully customized solution at a fixed price.
- A standard utility solution at a mutualized price.
- A managed hosted services model.

IDMS also hosts the underlying Enterprise Data Management (EDM) platform that manages the data, comprising:

- **VDPS (Valorendaten Pflegesystem)** – our asset data maintenance system.
- **Vendor agnostic acquisition layer** – supporting over 150+ vendor feeds.
- **Data validation layer** – ensuring high quality data and workflow for exception processing via a configurable rules engine.
- **Data mastering** – giving you with a golden copy of your data through sourcing, sorting, scrubbing and organizing data directly from data vendors and exchanges in accordance with your governance and data quality requirements.
- **Extensive data coverage** – handling data from 120+ data vendors and exchanges across all asset classes and geographies, including data specific locations such as the US, Europe and APAC.
- **Data distribution layer** – using APIs to integrate data into your downstream systems.
- **Event management** – controlling the timing of data sourcing and distribution.
- **Data entitlements** – controlling access to your client data repository.

Capgemini accelerators deliver **Data Quality Management (DQM)** value-adds, **Robotic Process Automation (RPA)** capabilities, and robust data governance risk and compliance frameworks, which provide a complete change function for your risk and regulatory compliance requirements. IDMS also leverages Rightshore®, our global delivery model, which helps you add value while using resources more effectively, and utility build.



Why Capgemini?

Our proven experience, vision and commitment of working with global banks and financial institutions is based upon an established data management practice that covers various aspects of reference data, including data quality, data architecture, data management operations, and IT and data governance.

Our IDMS offering is domain centric and fully supported by people from the industry that understand your business. Our team boasts over 500 knowledgeable and experienced industry experts in reference data EDM solutions, IT and operations, and over 40 consultants from tier 1 financial institutions – all of which have deep domain experience across global equities, fixed income and derivative asset classes, and technology transformation expertise.

Whether you are a financial institution embarking on a new data strategy or already some way down the road, our vast depth of knowledge, processes and industry best practices provides strategic direction to help steer you towards successful implementation of a new strategy and/or operating model – partnering with you on your journey towards securing your bank's target state.

We are proud of the value that IDMS continues to deliver to our clients and the results speak for themselves:

- We have managed an end-to-end data platform for a large tier 1 bank, including 61,000 corporate actions, 192 IT releases and 674 changes, with an error rate of less than 0.5% and a proven twin city model for robust disaster recovery.
- We have delivered multiple BCBS, MiFID and data quality programs for a range of US and European banks.
- Continuous client accolades from our clients recognizing our improved service.

About Capgemini

A global leader in consulting, technology services and digital transformation, Capgemini is at the forefront of innovation to address the entire breadth of clients' opportunities in the evolving world of cloud, digital and platforms. Building on its strong 50-year heritage and deep industry-specific expertise, Capgemini enables organizations to realize their business ambitions through an array of services from strategy to operations. Capgemini is driven by the conviction that the business value of technology comes from and through people. It is a multicultural company of 200,000 team members in over 40 countries. The Group reported 2016 global revenues of EUR 12.5 billion.

Visit us at

www.capgemini.com

People matter, results count.

The information contained in this document is proprietary. ©2017 Capgemini. All rights reserved. Rightshore® is a trademark belonging to Capgemini.



Capgemini's end-to-end reference data platform built on our own intellectual property strongly positions us to provide a comprehensive, full-fledged service to the banking industry

Preetham Kamesh,
Global Head, IDMS,
Capgemini's Business Services



Scan here to know more about Capgemini's Integrated Data Management Services



@CapgeminiBusSvc



<http://www.linkedin.com/company/bpo-thought-process>



businessservices.global@capgemini.com