

Deliver apps at the pace of innovation. Deliver a next-gen life-sciences experience.

Capgemini's Life Sciences Connect with MuleSoft helps life-sciences companies accelerate the pace of API-led modernization

From the widespread adoption of electronic health record systems to the rapid uptake of wearables and mobile health applications, life-sciences companies are seeing an exponential increase in healthcare data. In response, they must completely transform how they engage with providers, patients, and payers and launch new products and services, all while finding ways to optimize costs. Their ability to do that successfully is dependent on APIs, which connect data across systems, platforms, and devices to enable companies to access and act on real-time insights.

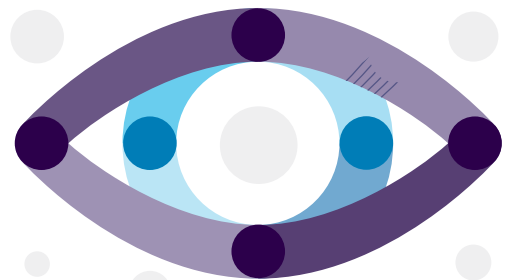
To get – and stay – ahead in the digital era, it's critical that life-sciences companies embrace APIs by modernizing their application and technology landscapes.



Achieve 20 to 25% in cost and time savings with Life Sciences Connect

Capgemini's Life Sciences Connect accelerates the process of API-led modernization with a combination of more than 80 pre-packaged, life-sciences-specific integrations along with API-led and microservices-based architecture frameworks. It also includes reusable mappings and transformations for sales orders, rebates, customers, and items as well as a data-conversion utility with a graphical UI.

It can be deployed in production in a matter of weeks instead of months, reducing time-to-launch and significantly cutting up-front development and deployment costs. Additionally, with our pre-built integrations, frameworks, and accelerators, organizations can achieve 20–25% in cost and time savings. These are built on MuleSoft and can be deployed in MuleSoft CloudHub, on-premises, or in hybrid MuleSoft environments.





Modernize with Capgemini's Core Integration Framework

Life Sciences Connect includes Capgemini's Core Integration Framework, which brings together a reference architecture, integration guiding principles, development standards, architectural design patterns, implementation patterns, and an API-centric implementation methodology. A Java-based and open-source framework with a fully functional codebase, the Core Integration Framework provides a comprehensive foundation for any integration project across public, private, or hybrid clouds and allows teams to review data elements in a user-friendly interface.

Additionally, its loosely coupled, microservices- and API-based architecture makes it extremely easy to extend its data- and metrics-driven dashboards to any combination of data sources such as B2B, EDI, events, ETL, and managed file transfer using integration technologies such as SOAP, REST, and messaging (JMS, AQ, UMS, MQ, etc.). Together, these modules form a one-stop shop for monitoring all transactions across various interfaces.



Accelerate time-to-launch with Capgemini's DevOps Integrated Framework

Life Sciences Connect also incorporates Capgemini's DevOps Integrated Framework, a continuous integration, testing, and deployment automation framework to alleviate code-delivery bottlenecks and ensure rapid release. It enables DevOps tooling such as Jenkins and Github and is fully integrated with containerization tools like Kubernetes. It allows you to reduce MuleSoft-based build, test, and deployment automation from months to weeks.

About Capgemini

Capgemini is a global leader in consulting, digital transformation, technology and engineering services. The Group is at the forefront of innovation to address the entire breadth of clients' opportunities in the evolving world of cloud, digital and platforms. Building on its strong 50-year+ heritage and deep industry-specific expertise, Capgemini enables organizations to realize their business ambitions through an array of services from strategy to operations. Capgemini is driven by the conviction that the business value of technology comes from and through people. Today, it is a multicultural company of 270,000 team members in almost 50 countries. With Altran, the Group reported 2019 combined revenues of \$18.5 billion.

Learn more about us at

www.capgemini.com

Note: current conversion is €1 to \$1.09 (4/1/20)

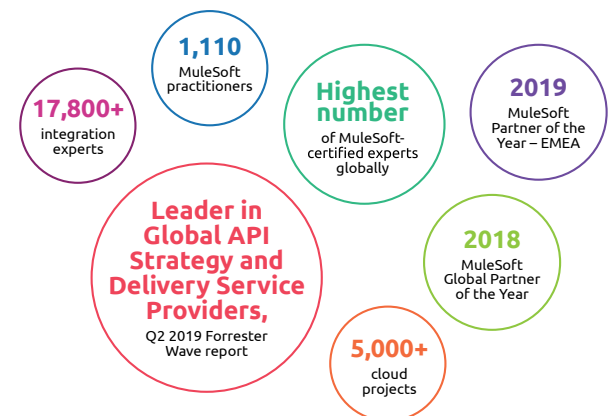
80+ pre-packaged, life-sciences-specific integrations to some of the most common industry applications:

- NetSuite (accounting and HR)
- Microsoft Dynamics CRM (customer relationship management)
- ADP (HR, Payroll)
- Active Directory (HR Enrollment)
- Autodesk fusion lifecycle (PLM solution)
- Hyperion Financial Management (fiscal reporting)
- Concur (travel and expense management and employee updates)
- Episerver (web content management, digital commerce, and digital marketing)
- Quintiles IMS (analytics)
- Model N (revenue management)
- Healthcare organization rosters



Helping you deliver on digital

Together, Capgemini and MuleSoft help you make digital business a reality. A leading MuleSoft partner, Capgemini works with organizations all over the world to help them leverage APIs and MuleSoft's AnyPoint platform to form the connections that make digital business a reality. Our unparalleled integration expertise, from the number of certified experts on our teams to the size, scale, and complexity of our engagements, means that when you work with Capgemini, you get access to the expertise you need to leverage your data to get – and stay – ahead in the digital era.



The information contained herein is provided for general informational purposes only and does not create a professional or advisory relationship. It is provided without warranty or assurance of any kind.

People matter, results count.

The information contained in this document is proprietary. ©2020 Capgemini. All rights reserved.