

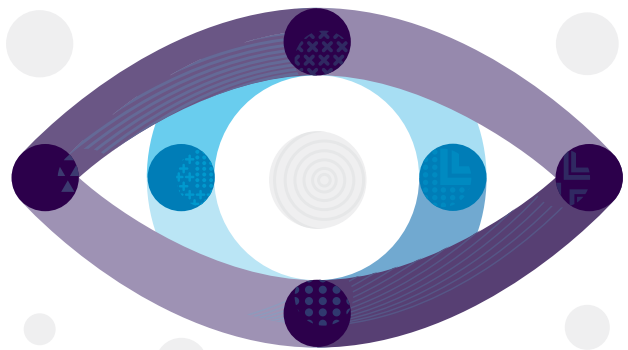


Accelerate API-led modernization by 20 to 25%

Leverage Capgemini's Core Integration Framework



From ground-breaking customer experiences to breakthrough technologies like artificial intelligence, the digital era has ushered in unprecedented opportunities for organizations to leverage technology to get – and stay – ahead. At the core of any successful digital strategy is data, but many organizations face challenges connecting that data across systems, platforms, and devices in real-time to make digital business a reality. This is because many contend with legacy systems that have monolithic architectures connected through point-to-point integrations, instead of truly modular microservices and API-led architectures.



The power of API-led modernization

With API-led modernization, organizations connect and combine data from disparate sources – securely and at scale. They use APIs to unlock data from systems, compile data into processes, and connect applications to data via purposeful and reusable services. They have real-time access to data that allows them to make instant, insight-driven decisions, leverage cutting-edge technologies, and deliver the experiences their customers and employees increasingly expect. In this way, APIs are at the core of digital business. To get there, organizations need to modernize and update their application and technology landscapes.

Accelerate your API-led modernization journey by 20 to 25% with Capgemini's Core Integration Framework

Capgemini's Core Integration Framework was designed to simplify and accelerate API-led modernization to enable digital business. A Java-based and open-source framework with a fully functional codebase, the Core Integration Framework provides a

comprehensive foundation for any integration project across public, private, or hybrid clouds. It brings together a reference architecture, integration guiding principles, development standards, architectural design patterns, implementation patterns, and an API-centric implementation methodology. Because of this, it can help organizations save 20% to 25% in implementation time and cost savings.

It includes a few core modules, including a data-integration module that maintains run-time transactional views and metrics, an integration error-management module that logs all errors, and a module for parameters and cross-referencing that manages the correlation of business data between business applications. Additionally, its loosely coupled, microservices- and API-based architecture makes it extremely easy to extend its data- and metrics-driven dashboards to any combination of data sources, such as B2B, EDI, events, ETL, and managed file transfer using integration technologies such as SOAP, REST, and messaging (JMS, AQ, UMS, MQ, etc.). In this way, the Core Integration Framework forms a one-stop shop for monitoring all MuleSoft-based transactions across various data sources and interfaces.

Real-time visibility of MuleSoft transactions for logging and errors

Ability to review data elements in a business-user friendly user interface

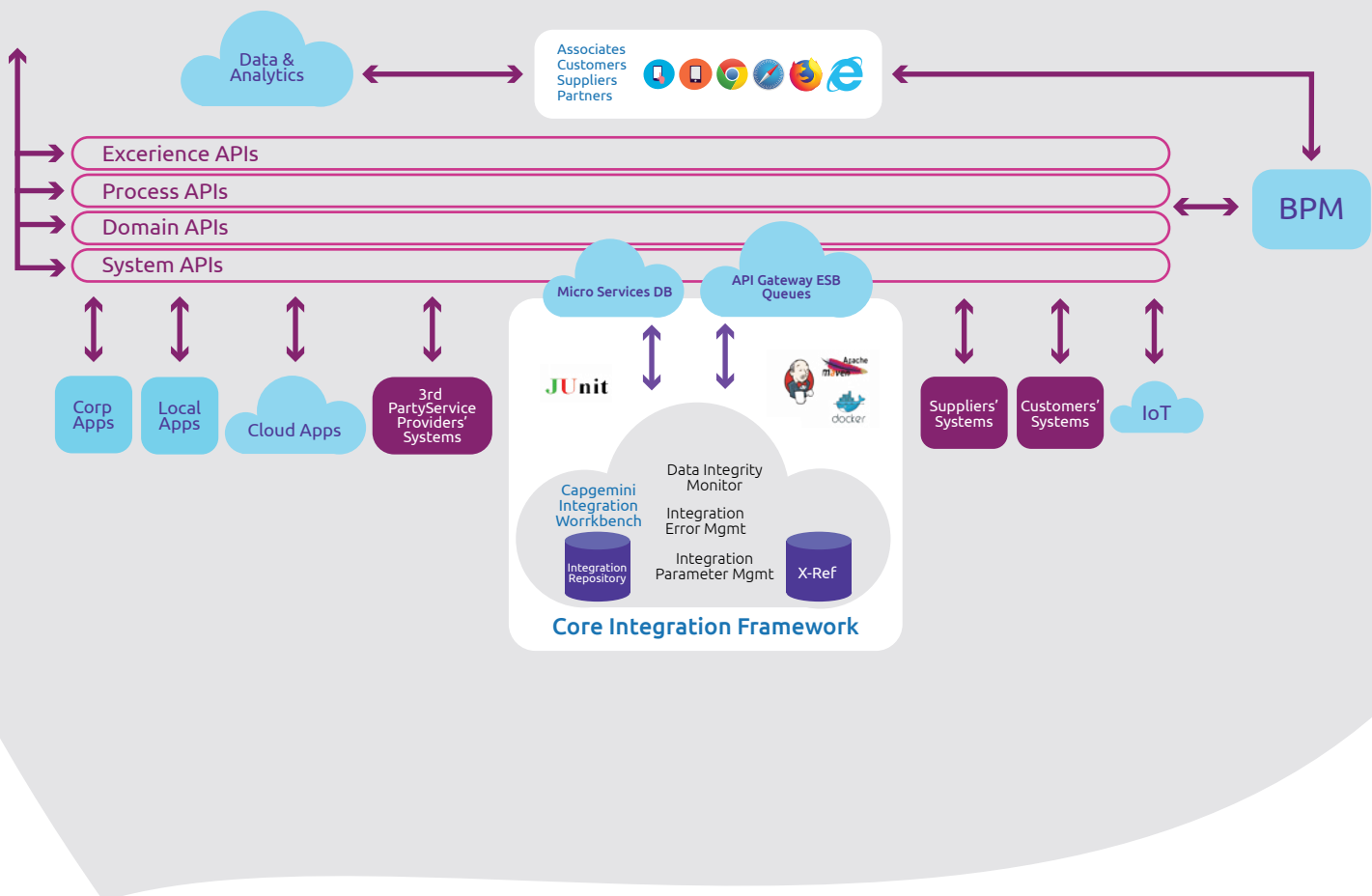
Ability to fix data errors and review and re-submit messages for processing after fixing

Externalization of parameters instead of hard coding them into integrations

Common error-handling, logging, and exception-handling framework

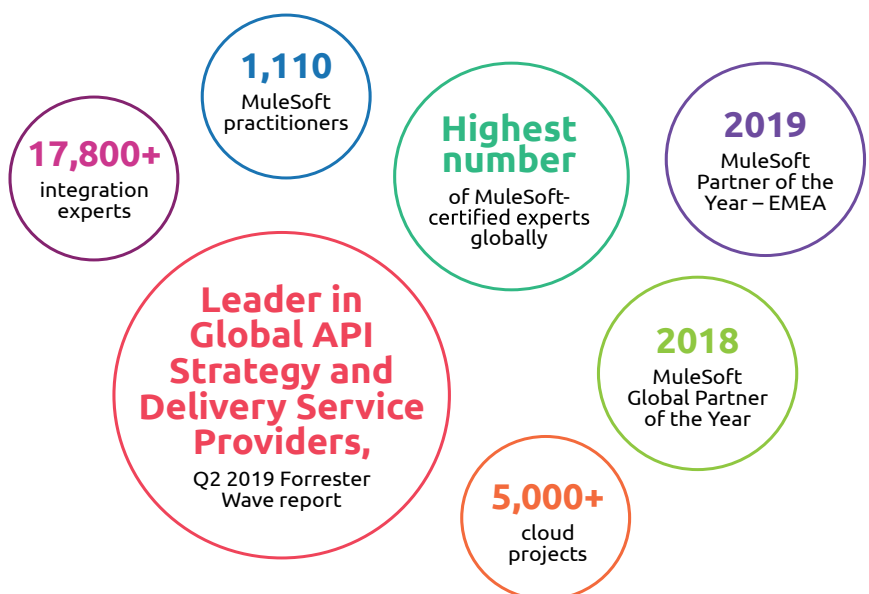
Alerting of a health check by sending email notifications to users

Extensibility to any combination of data sources – B2B, EDI, ETL – and managed file transfer (MFT) using integration technologies such as SOAP, REST, Messaging (JMS, AQ, UMS, MQ, etc.)



Helping you deliver on digital

Together, Capgemini and MuleSoft help you harness the power of API-led modernization. A leading MuleSoft partner, Capgemini works with organizations all over the world to help them leverage APIs and MuleSoft's AnyPoint platform to form the connections that make digital business a reality. Our unparalleled integration expertise, from the number of certified experts on our teams to the size, scale, and complexity of our engagements, means that when you work with Capgemini, you get access to the expertise to leverage your data to get – and stay – ahead in the digital era.





About Capgemini

Capgemini is a global leader in consulting, digital transformation, technology and engineering services. The Group is at the forefront of innovation to address the entire breadth of clients' opportunities in the evolving world of cloud, digital and platforms. Building on its strong 50-year+ heritage and deep industry-specific expertise, Capgemini enables organizations to realize their business ambitions through an array of services from strategy to operations. Capgemini is driven by the conviction that the business value of technology comes from and through people. Today, it is a multicultural company of 270,000 team members in almost 50 countries. With Altran, the Group reported 2019 combined revenues of \$18.5 billion.

Learn more about us at

www.capgemini.com

Note: current conversion is €1 to \$1.09 (4/1/20)

People matter, results count.

The information contained in this document is proprietary. ©2020 Capgemini.