

Get the Best Out of SAP S/4HANA® Transformation!

Defining a successful path towards SAP S/4HANA to secure your journey and get the maximum value for your business

But SAP Customers Raise Fundamental Questions...



Do these questions seem familiar? How often are you engaged in discussions which ask the most pertinent, fundamental questions while making transformational shifts?

“ Customers want to understand the business value, adoption approaches and functional impacts on their already heavily invested customizations. They want to know the actual ROI and benefits! What customers don't want, is to talk from 35,000 feet above ground reality.

In today's revolution of Digital, the market for a cloud-first business transformation is exploding. Organizations are investing rapidly in transforming their business models, their business processes and the supporting innovative technology, that would allow these changes to be scalable and agile. SAP S/4HANA Cloud is a SaaS based solution designed to deliver key business processes in an 'as-a-service' model. It provides pre-configured content for core business processes in finance, procurement, manufacturing and supply chain.

With organizations rapidly embarking on complex digital transformation digital transformation journeys, both the On-premise as well as the Cloud editions, of the SAP Business Business Suite 4 SAP HANA® (S/4HANA) is supposed to drive value across lines of business and industries with the ambition to Run Digitized and Efficient processes. However such journeys are never simple. They are never straightforward. There are uncertainties, pitfalls, questions on the "How and Why do I make this move", and of course the classic, "uh-oh!" moment.

Choose Capgemini.
Choose our Highway to SAP S/4HANA Offering.

Fasten your seatbelts!

Beyond the SAP Transformation Navigator engagement, Capgemini helps clients to craft a tailored approach at every stage of the adoption journey using various tools and accelerators: assessment, preconfigured scenarios, process mining, deployment options, solution options, functional scope, pre-checks, custom code analysis.

Your Challenges? Our Answers!

- The Highway to SAP S/4HANA offering from Capgemini caters to anyone who is thinking of moving to SAP S/4HANA either on-premise, or, on the cloud, or in the process of the move to SAP S/4HANA, with the singular aim of succeeding and getting the best out of SAP S/4HANA
- Scope to an immediate or near-term adoption while involving both the IT and business with business benefits
- The complete packaged set of Tools, Reusable content, Pre-configured Scenarios, PoV's and understanding on SAP interfacing products

Why YOU need this!

- Capgemini supports SAP S/4HANA led transformation both from a business transformation perspective and SAP S/4HANA adoption
- Clear view of the target architecture and roadmap. Support the business benefits case—Helps you For example, typically, The public cloud edition, unlike it's on-premise sibling, is suited to companies who have decided to "fit-to-standard", get access to continuous instant technology innovation and concentrate on the acceleration of their growth locally and worldwide without any localization and version upgrade constraint
- By opening our SAP S/4HANA Toolbox we can provide accelerators, pre-defined scenarios and PoV's to drastically reduce costs and time—thereby making adoption predictable and planned

The Highway to SAP S/4HANA Offering

Accelerators & Toolbox



Out of the box...

- Help along every step of the journey
- Tangible assets to visualize benefits
- Reusable content to accelerate implementation
- Solution / Use cases for industry
- Understanding on SAP interfacing products

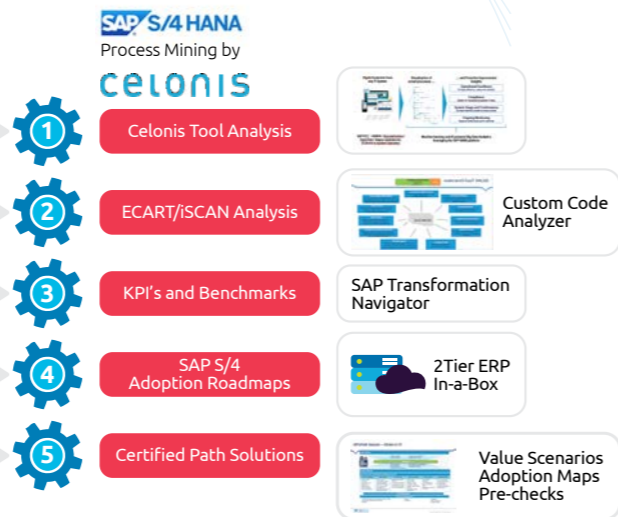
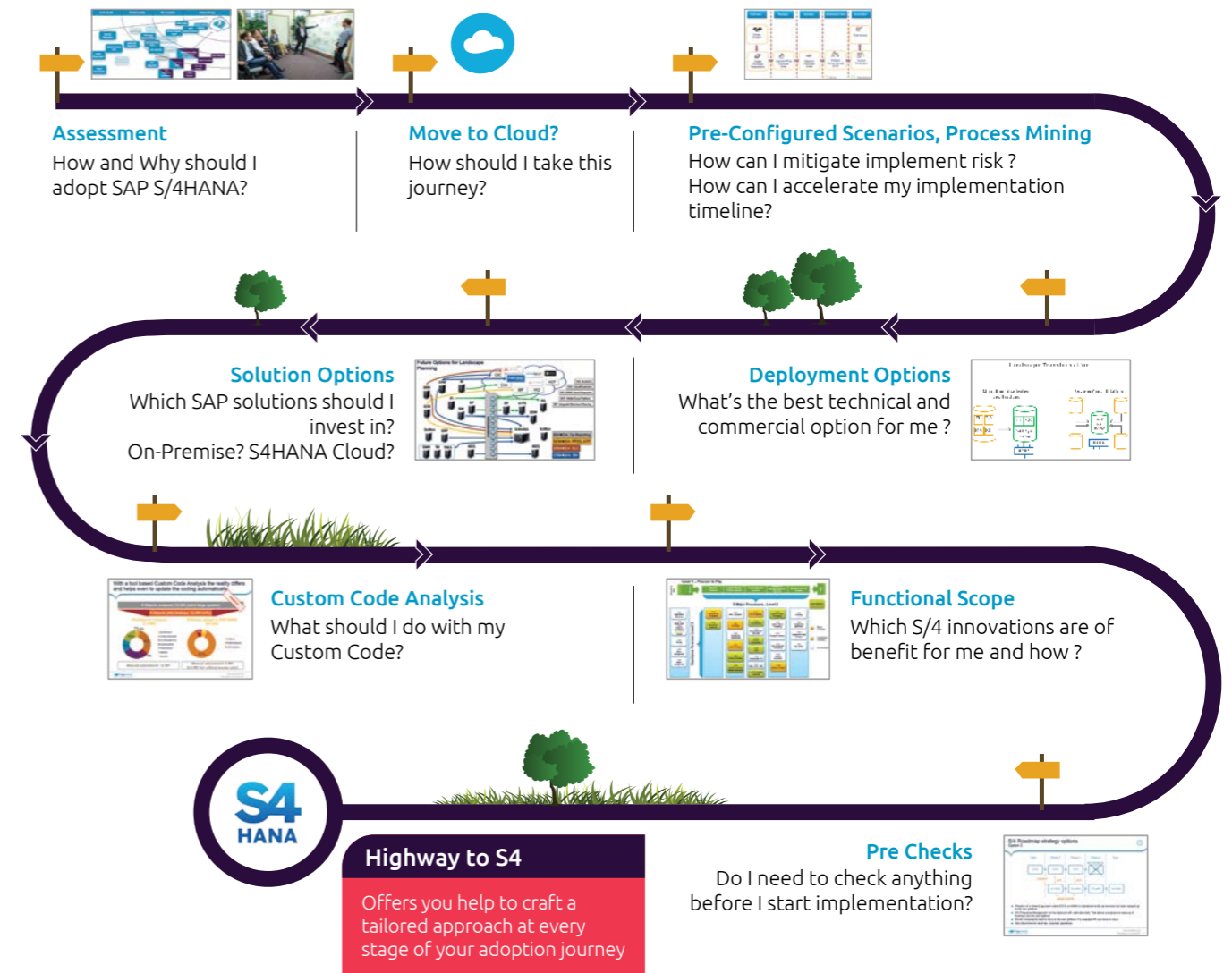


Figure 2: Under the Hood - Highway to SAP S/4HANA



Help at every point of your journey, irrespective of where you are!

What kind of help?

- Assessments
- Deployment Options
- Solution Options
- Preconfigured Scenarios
- Functional Scope
- Pre-Checks and Custom Code

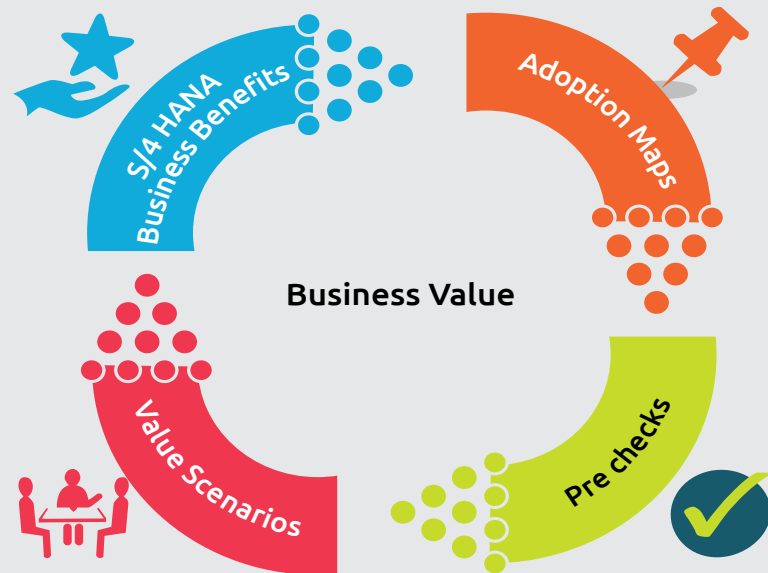
It's not typical consultative or simple assessments. We bring to the table best-in-class tools and provide new industry and functional solutions that use SAP S/4HANA including custom functionality, for both, the On-premise and the Cloud editions!

Our Capabilities and Experiences

- Scores of projects on SAP S/4HANA executed
- A Center of Excellence with 100 SAP S/4HANA experts across geographies
- Experts across functions—Strategy and Architecture, Finance, Logistics and Supply Chain, Procurement
- Industry expertise—Manufacturing, Automotive, Lifesciences, Energy, Utilities, Consumer Products, Retail, Distribution

... Fully mobilized to drive a complete IT and business transformation

Figure 3: Understand what's in there for you for your business!



About Capgemini

A global leader in consulting, technology services and digital transformation, Capgemini is at the forefront of innovation to address the entire breadth of clients' opportunities in the evolving world of cloud, digital and platforms. Building on its strong 50-year heritage and deep industry-specific expertise, Capgemini enables organizations to realize their business ambitions through an array of services from strategy to operations. Capgemini is driven by the conviction that the business value of technology comes from and through people. It is a multicultural company of 200,000 team members in over 40 countries. The Group reported 2017 global revenues of EUR 12.8 billion.

Learn more about us at

www.capgemini.com

For more details contact:

Girish Page

Global Highway to SAP S/4HANA Offer Lead
girish.page@capgemini.com

Siva Subrahmanyam

North America SAP Technology Lead
siva.subrahmanyam@capgemini.com

Valery Smague

SAP Center of Excellence Portfolio Lead
valery.smague@capgemini.com