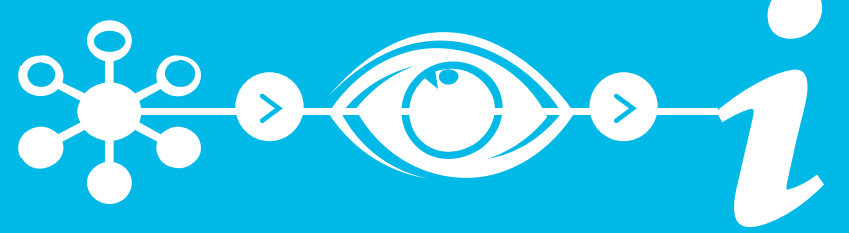


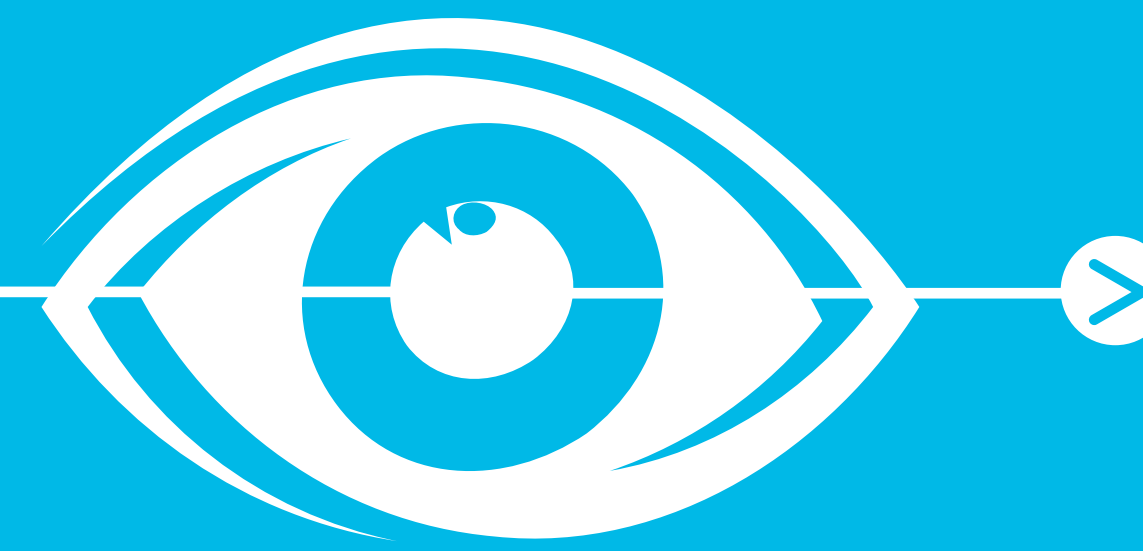
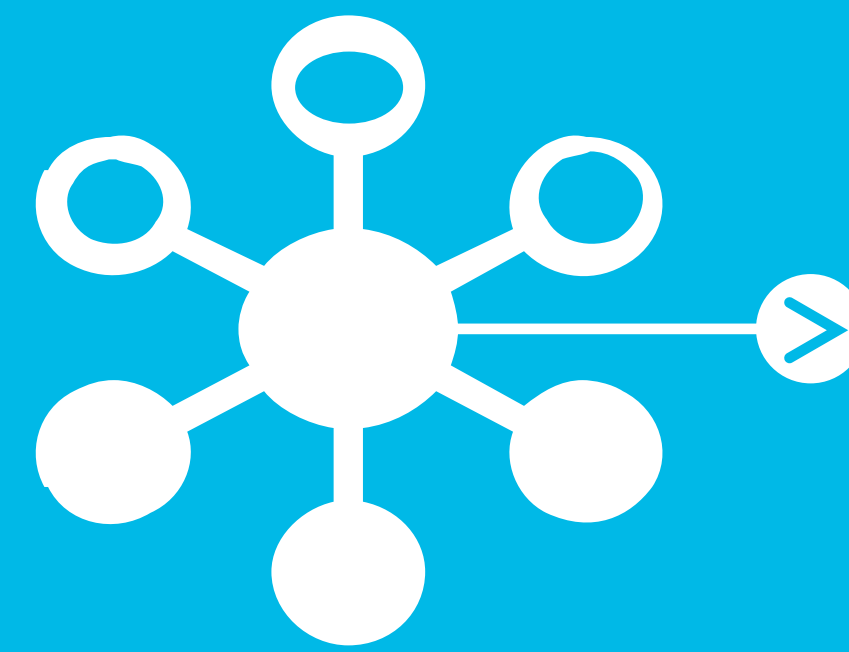


TECHNOVISION
— 2022 —
BEING LIKE WATER



INVISIBLE  *i*
INFOSTRUCTURE

- LORD OF THE CLOUDS
- CROUCHING TIGER, HIDDEN CONTAINER
- SIMPLY THE EDGE
- OPS, AI DID IT AGAIN
- SILENCE OF THE SERVERS



Capgemini 



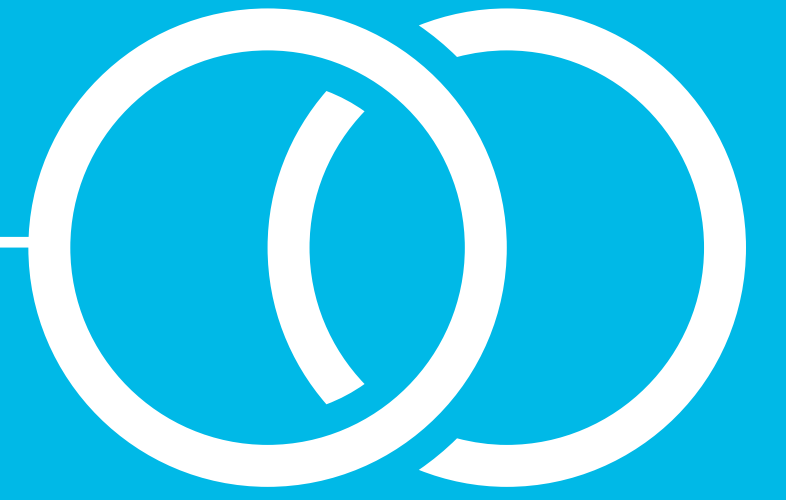
TECHNOVISION
2022
BEING LIKE WATER



LORD OF THE CLOUDS



Cloud adoption moves far beyond the middle-earth realm of cloud migration, now also driven by sustainability, distribution, sovereignty, "FinOps" and multi-cloud forces – all for that precious, better business flow



Capgemini 



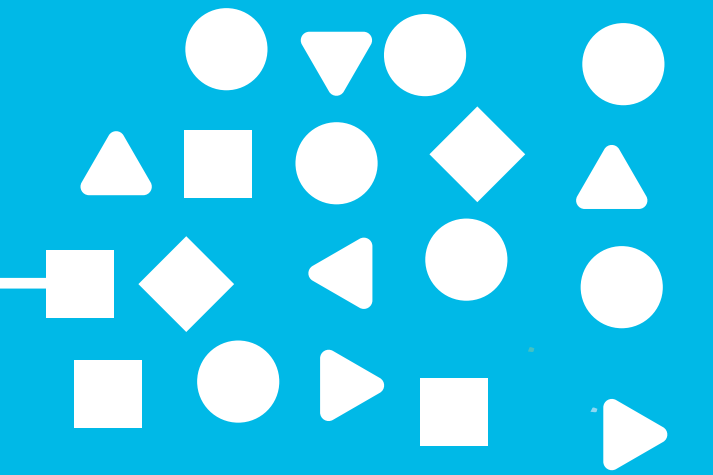
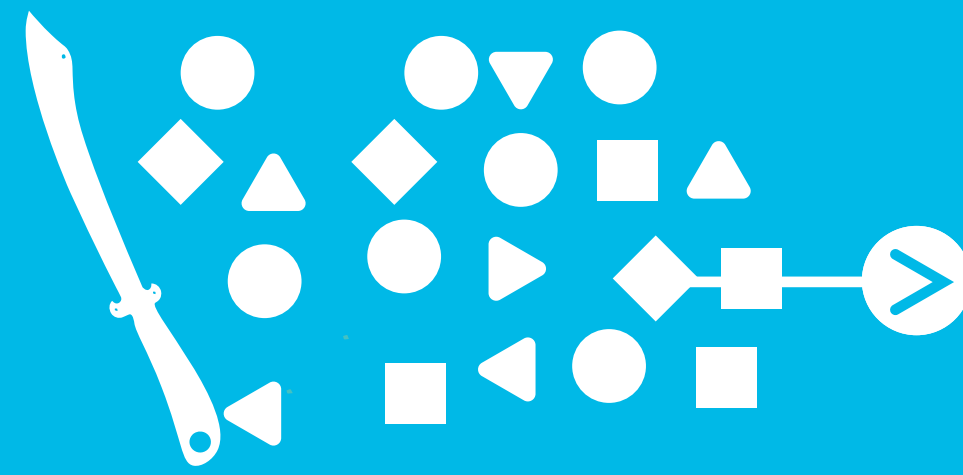
TECHNOVISION
2022
BEING LIKE WATER



CROUCHING TIGER, HIDDEN CONTAINER



All the complex infrastructure an application needs, nothing to see but next-generation, energy-saving containers that will run anywhere, delivering multiple critical consumer-facing business services



Capgemini 



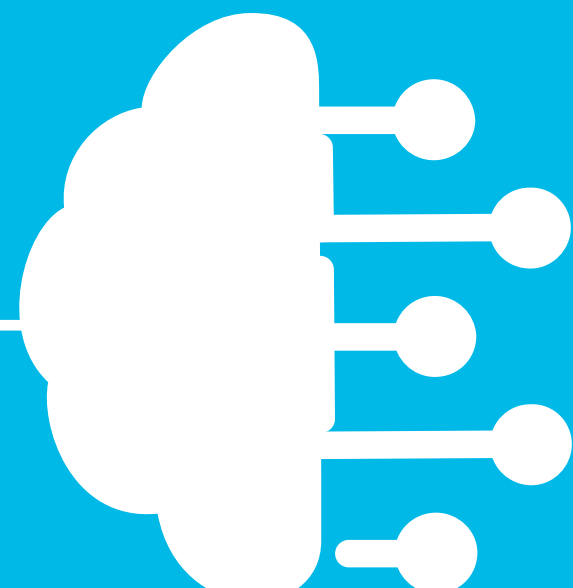
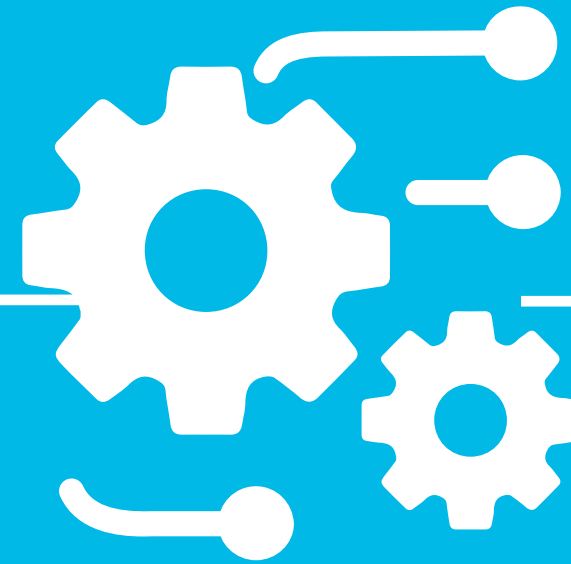
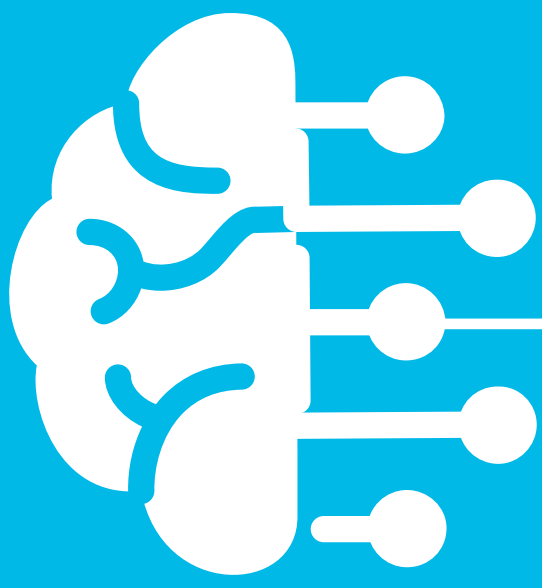
TECHNOVISION
2022
BEING LIKE WATER



OPS, AI DID IT AGAIN



AI renders IT operations fluid, proactive, and resilient, improving efficiency and reliability while it learns – on its way to full, handsfree autonomy



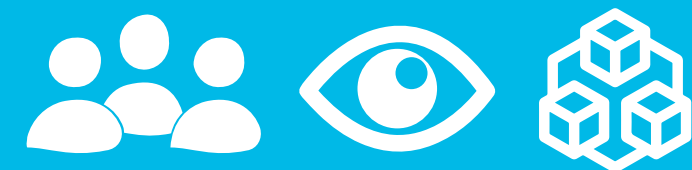
Capgemini 



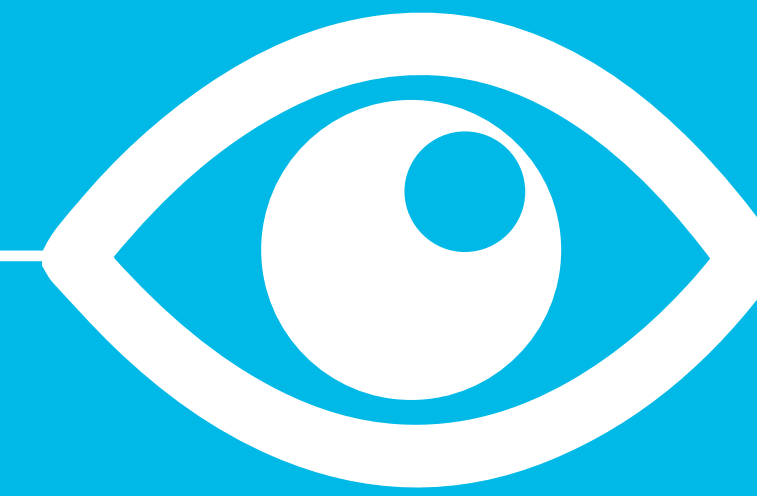
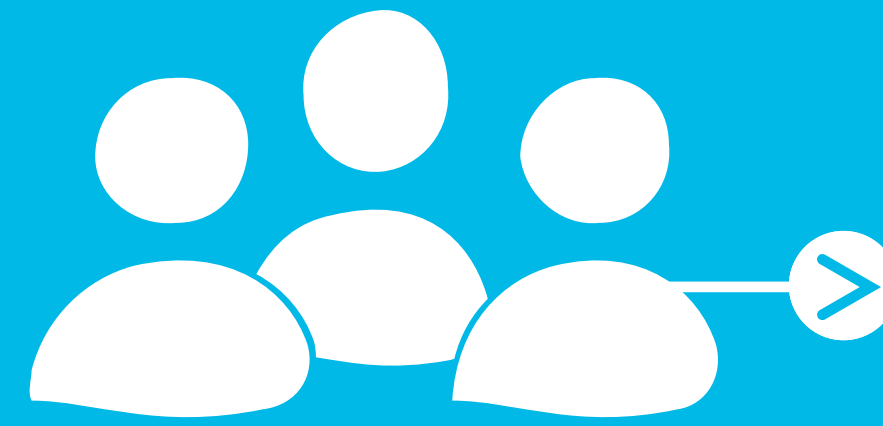
TECHNOVISION
2022
BEING LIKE WATER



SIMPLY THE EDGE



Intelligent devices, at the "edge" of central IT and close to operations, add a powerful dimension to the existing IT infrastructure



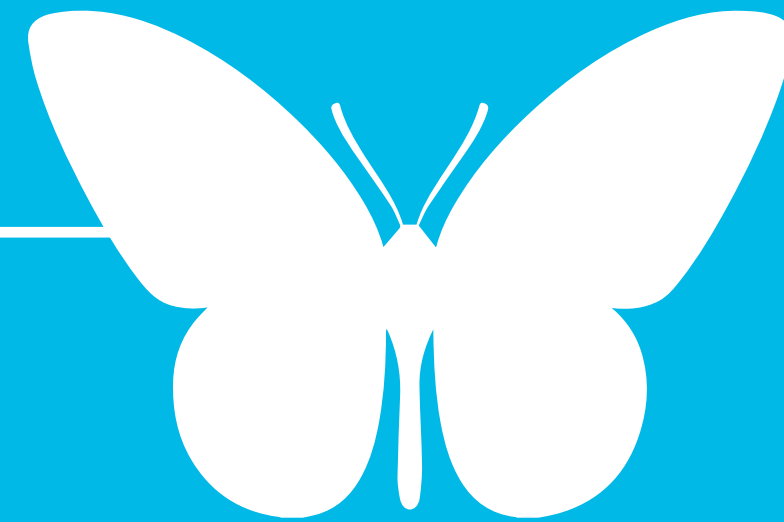
Capgemini 



SILENCE OF THE SERVERS



Building a highly automated, self-optimizing IT infrastructure that is so entwined with business operations, that it is no longer distinctly noticeable



Capgemini 